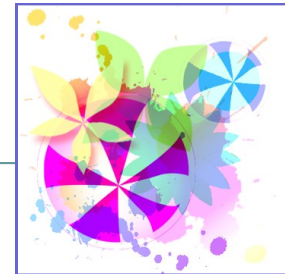


# ANNUAL GENERAL MEETING—Spring 2010

June 23, 2010

## MESSAGE FROM THE CHAIRMAN



### Dear Municipality Members,

I would like to take this opportunity to thank my fellow board members John Kaster, Barrie Hoover, Wayne Richardson, Art Standing, Don Guidolin and Dale Kent for their contribution and dedication to your Board of Directors and Palliser Regional Municipal Services Ltd.

2009 was a year of change for the organization as Wheatland County withdrew as a shareholder and there were various staff changes. While this has proved to be challenging at times, it is leading to improved levels of service for the PRMS member municipalities.

As determined by the member municipalities at a Strategic Planning session in May, Palliser Regional Municipal Services has a new Strategic Plan that will be reviewed later in the meeting to help us move forward in providing our region with effective and affordable local government services.

Thank you to the Municipal representatives who participated and provided the vital information necessary to create this plan. As well, I would like to thank our CEO Brad Wiebe and his staff Garry Wilson, Ed Hart, Charlene Viste, Michele Buchwitz & Kari Bott for ensuring that Palliser continues to provide these services with the expertise that supports regional cooperation and communication. - **Annon Hovde**

# ANNUAL GENERAL MEETING—Spring 2010

## MUNICIPAL MEMBERS & PRMS REPRESENTATIVES

County of Paintearth No. 18	Wayne Richardson
M.D. of Acadia No. 34	Albert McFadyen
Special Area 2	G. Art Standing
Special Area 3	Mel Bingeman
Special Area 4	Lawrence Letniak
Starland County	Barrie Hoover
Town of Castor	Dennis Filipenko
Town of Coronation	Lorena Scheffelmaier
Town of Drumheller	Don Guidolin
Town of Hanna	John Kaster
Town of Oyen	Lois Bedwell
Town of Trochu	Chris Reeds
Village of Acme	Dennis Kuiken
Village of Beiseker	Fred Walters
Village of Carbon	Shirley Buyer
Village of Cereal	Tammy Olds
Village of Consort	Gerald Rehman
Village of Delia	Gordon Isaac
Village of Empress	Roderick Briggs
Village of Halkirk	Dale Kent
Village of Hussar	undetermined
Village of Linden	Annon Hovde
Village of Morrin	Skip McArthur
Village of Munson	Steve Hayes
Village of Rockyford	Julie Gaudett
Village of Standard	Don Cuthill
Village of Veteran	Pat Gorcak
Village of Youngstown	Bob Allan

# ANNUAL GENERAL MEETING—Spring 2010

## BOARD OF DIRECTORS

Wayne Richardson	County of Paintearth No. 18
G. Art Standing	Special Area 2
Barrie Hoover	Starland County
Don Guidolin	Town of Drumheller
John Kaster, Vice Chairman	Town of Hanna
Dale Kent	Village of Halkirk
Annon Hovde, Chairman	Village of Linden

## STAFF MEMBERS

Brad Wiebe	CEO
Kari Bott	Executive Assistant
Garry Wilson	Planner I
Charlene Viste	Sustainability Coordinator
Edward Hart	GIS Coordinator
Michele Buchwitz	Planning Assistant



This photo was taken earlier today of our CEO Brad Wiebe cleaning in preparation for today's meeting. He is a terrific guy to have around and we are proud of all that he does!

# ANNUAL GENERAL MEETING—Spring 2010

## PLANNING

### **Municipal Statutory Planning Activity Update**

The Palliser Regional Municipal Services (PRMS) work plan has followed a first-come first-served approach for the development of statutory plans such as Municipal Development Plans (MDP's), Inter-Municipal Development Plans (IDP's), Area Structure Plans (ASP's), Area Redevelopment Plans (ARP's), and Land Use Bylaw reviews along with other municipal policy or planning projects including annexation applications, addressing policies, growth studies, etc. The current model is intended to be phased out as service delivery problems have resulted from the first-come first-served approach due to the lack of sufficient staffing to keep up with the demand. A business model will be established in the coming months whereby PRMS will be accountable for the delivery of a complete planning policy review for each member municipality every 5 years with the necessary updates and policy development as part of the requisition based services. The new program is to be ready for implementation in January 2011.

### ***The 2010 Policy Planning work plan contains the following projects:***

#### **Rural:**

<b>M.D. of Acadia</b>	Transportation and Subdivision Concept Designs Municipal Development Plan Land Use Bylaw
<b>Special Area No. 2</b>	Intermunicipal Development Plan with Town of Hanna

#### **Urban:**

<b>Town of Hanna</b>	Canada Grey Landing Area Structure Plan (Completed as Bylaw 950-2010) Intermunicipal Development Plan with Special Area No. 2 Municipal Development Plan- Land Use Bylaw (2011) Annexation Application completion
<b>Town of Oyen</b>	Recreation Master Plan
<b>Town of Drumheller</b>	Land Use Bylaw Amendments Package May 2010 and Office Consolidation of LUB
<b>Town of Coronation</b>	Road Closures and Consolidations Package Area Structure Plan (Golf Course area)
<b>Town of Castor</b>	Municipal Development Plan Land Use Bylaw
<b>Village of Morrin</b>	Residential Subdivision Design Concepts

#### **Other Projects and Services:**

**3 Joint Assessment Review Boards** Development and Assistance

**M.D. of Provost** Wind Energy Conversion System Updates in the Land Use Bylaw and Municipal Development Plan

# ANNUAL GENERAL MEETING—Spring 2010

## SUBDIVISION

Table I “Subdivision Applications to June 23 by Municipality” compares the activity for the last eight (8) years to today’s date in order to allow for comparison. It shows that the subdivision activity is up slightly to this same time as last year, it shows that the numbers are comparable to the pre-peak years of 2006, 2007 and part of 2008. The activity within Special Areas is down but the applications are up within Starland County when compared to 2009. While the numbers generally slow through the mid summer months, trends show that subdivision activity generally picks up in late summer and throughout the autumn.

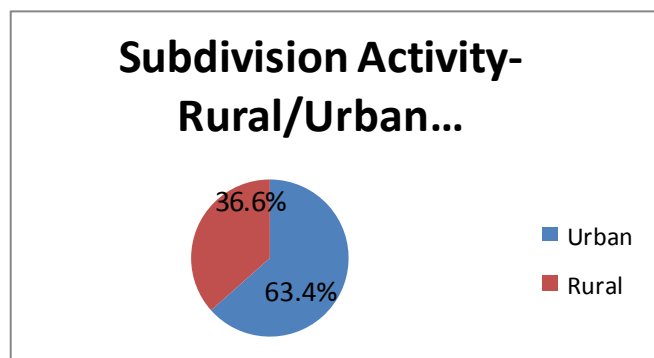
Ten of the twenty-eight (28) communities serviced by Palliser Regional Municipal Services (PRMS) reflect either an increase or equal amount of activity as compared to this time in 2009. The member rural communities of County of Paintearth, Special Areas and Starland County all have three subdivisions each, while non-member M.D. of Provost leads with a total of five (5) subdivisions to this point in time. Of note is that the subdivision activity within both Special Areas and the M.D. of Provost are down significantly when compared to last year, however Starland County, having had a slow 2009, only half way through the year equals its total for last year. The Town of Drumheller leads the urban municipalities in subdivision activity with a total of four (4) followed by Beiseker, Hanna, Halkirk, Hussar, Standard and Linden all having one subdivision each.

When the total number of “parcels” are taken into account, versus subdivision numbers, the urban applications tend to have more lots developed per application. Roughly 58% (or 10 applications) of the subdivision applications were from our urban municipalities, while 42% (or 14 applications) were rural. When the number of lots or parcels is taken into consideration, the percentages change to: 63% (or 52 lots) urban and 37% (or 30 lots) rural. This is the first time in a number of years when the number of urban subdivisions nearly equals the rural applications. In previous years the rural applications have far succeeded the “urbans”.

### Subdivision Activity-Rural/Urban

#### By Parcel (lot)

Urban	Rural
52	30
63.40%	36.60%



# ANNUAL GENERAL MEETING—Spring 2010

## SUBDIVISION APPLICATIONS BY MUNICIPALITY—TO JUNE 23 Table I

Municipality	2003	2004	2005	2006	2007	2008	2009	2010
M.D. Acadia				3	3	3		
Acme						1		
Beiseker	N/A	N/A	N/A	N/A	N/A	1		1
Carbon						1		
Castor		1		1	2	3		
Cereal								
Consort			1					
Coronation					3		1	
Delia					1			
Drumheller	6	1	7	3	8	6	3	4
Empress				1		3		
Hanna	1	1	2	3	2	1	1	1
Halkirk				1		1	1	1
Hussar	N/A	N/A	N/A	N/A	N/A			1
Linden	3		1				1	
Morrin	1		1					
Munson				1				
Oyen		1		1				
Paintearth	4	3	3	3	3	6	1	3
Rockyford	N/A	N/A	N/A	N/A	N/A			
Special Areas	7	7	5	13	8	8	8	3
Standard	N/A	N/A	N/A	N/A	N/A			1
Starland	4	4	4	7	11	6	1	3
Trochu	1	1	2	1		3		1
Veteran					1			
Youngstown								
Gadsby**				1	1			
M.D. Provost**	2	7	3	10	9	12	5	5
<b>TOTALS</b>	<b>29</b>	<b>26</b>	<b>29</b>	<b>49</b>	<b>52</b>	<b>55</b>	<b>22</b>	<b>24</b>

\*\* Non member Municipality

Totals are January - June 23rd for respective years.

# ANNUAL GENERAL MEETING—Spring 2010

SUBDIVISION—Number of Lots per Classification by Municipality—Table II

PALLISER REGIONAL MUNICIPAL SERVICES

Municipality	Country Residential	Farmstead Separation	Agricultural	Urban Residential	Industrial	Commercial	Recreational
M.D. Acadia	1						
Acme							
Beiseker							
Carbon							
Castor							
Cereal							
Consort							
Coronation				4		3	
Delia							
Drumheller				51			
Empress							
Hanna				2	3	5	
Halkirk					1		
Hussar				8			
Linden				10			
Morrin							
Munson				3			
Oyen							
Paintearth	4	2			1		1
Rockyford							
Special Areas	2	2	3		5		
Standard							
Starland	2	2					
Trochu							
Veteran							
Youngstown							
Gadsby**							
M.D. of Provost**	6	4	1		3		
<b>TOTALS</b>	<b>48</b>	<b>10</b>	<b>4</b>	<b>78</b>	<b>13</b>	<b>8</b>	<b>1</b>

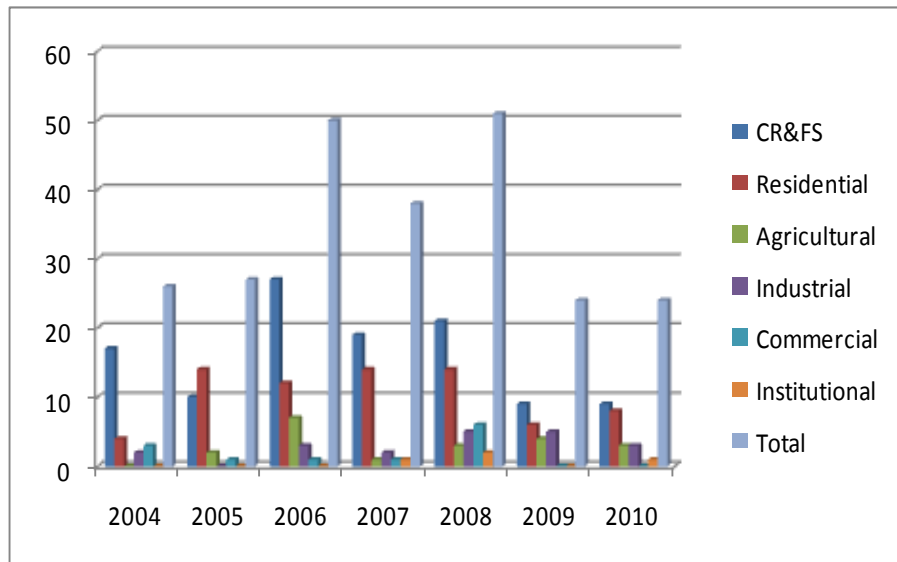
\*\* Non member Municipality

# ANNUAL GENERAL MEETING—Spring 2010

PALLISER REGIONAL MUNICIPAL SERVICES

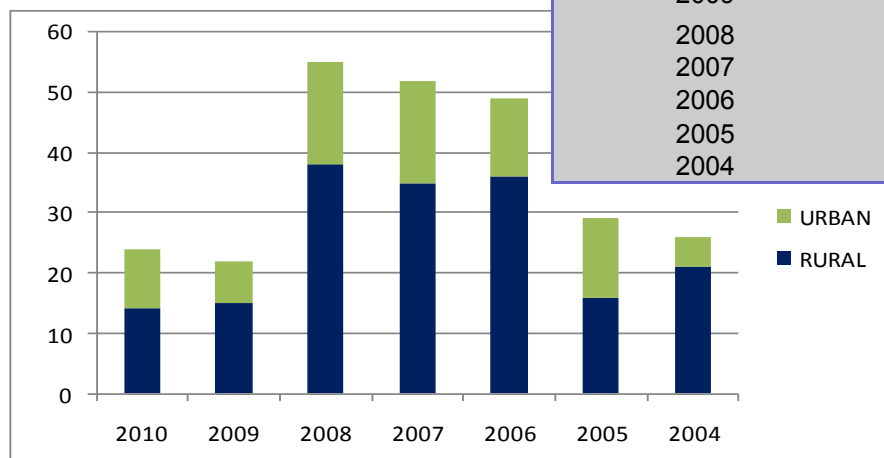
## SUBDIVISION—By Classification & Type

	2004	2005	2006	2007	2008	2009	2010
CR&FS	17	10	27	19	21	9	9
Residential	4	14	12	14	14	6	8
Agricultural	0	2	7	1	3	4	3
Industrial	2	0	3	2	5	5	3
Commercial	3	1	1	1	6	0	0
Institutional	0	0	0	1	2	0	1
<b>Total</b>	<b>26</b>	<b>27</b>	<b>50</b>	<b>38</b>	<b>51</b>	<b>24</b>	<b>24</b>



## SUBDIVISION BY TYPE: RURAL URBAN

2010	14	10
2009	15	7
2008	38	17
2007	35	17
2006	36	13
2005	16	13
2004	21	5





# ANNUAL GENERAL MEETING—Spring 2010

---

## PRISM

Since the completion of PRISM I, PRMS has been working on the next phase of the PRISM Regional GIS project.

The roll out of the new Municipal Infrastructure Management System (MIMS) 5.x upgrade project has been slowed down due to software incompatibility between the web based viewer and development software.

The web site has been upgraded with the MapGuide Enterprise software to version 2010, with improved rendering speed for faster downloading of map information. There has been discussion with a number of municipalities about offering a public version of municipal maps for the general use of ratepayers.

Currently the Alberta Municipal Data Sharing Project (AMDSP) is releasing version 3 of the Emergency Routing Data set to several interested data set users: Alberta Health Services, Alberta Emergency Management Agency, Alberta One Call Corp., and Elections Alberta. PRMS is actively involved in managing data sets for that project on behalf of some of our member municipalities. We are currently recruiting other member municipalities to join AMDSP to improve emergency response coverage.

We will be going on the road soon to query the member municipalities about what they want PRISM to do for them, as well as to show them what we have currently running. Most municipalities need some training on PRISM web map usage.

---

## EXPLORATION GRANT

The exploration grant I received from Municipal Affairs in 2008 with Special Areas as the managing partner is continuing to move forward with the recent completion of the Regional Profile. The Strategic Business Plan is in draft form for review tonight. A communications strategy will be developed during the summer months for completion in the fall.

---

## PRMS STRATEGIC BUSINESS PLAN

Informal meetings have been held with most of the member CAO's this spring to determine a strategy for long term organizational success. These meetings were to present the CAO's with a questionnaire to assist in the formulation of the strategic business plan and future directions of PRMS. A strategic planning session was held in the PRMS boardroom on May 19, 2010 with Terry Vaughan, Alberta Culture and Community Spirit acting as the facilitator. Positive information was extracted from these two sources to develop the draft strategic business plan.

# ANNUAL GENERAL MEETING—Spring 2010

## REGIONAL PROFILE

The regional profile which addresses demography, contains a review of transportation systems, agriculture, education, recreation facilities, housing, the economy and health services in the Palliser region is available from the PRMS website.

## CN Rail Discontinuance Recovery Project – making CNR an offer

At the 2008 PRMS AGM the members requested that Palliser look into coordinating a plan for the announced CNR rail line discontinuance between Oyen and Lyalta, AB. A funding request was made to the Provincial Rural Community Adaptation Program (RCAP) in early 2009 for financial assistance to develop a rail continuance recovery plan for the region. PRMS was approved for funding to complete a comprehensive economic and business diversification strategy, that outlines feasible options to obtain and administer an abandoned rail-line, to support and facilitate the region's transportation system and surrounding area growth.

Further meetings have been held in communities along the rail line in 2010. These meetings have been to provide information to the public about becoming shareholders of the established short line rail company. Additional shareholders have continued to subscribe to help this worthy cause continue.

The Oyen-Lyalta Rail Company has been busy negotiating and trying to come to reasonable terms on an offer to purchase the rail line assets. An offer was submitted earlier this spring followed by a response from CNR with areas for improvement of the offer. A revised offer was submitted and CNR recently provided a counter-offer. The difference in the valuation of the rail line assets is extensive at this time but the Oyen-Lyalta Rail Company will continue to negotiate for a fair and reasonable purchase price.

### **Railway Board of Directors - Municipal Bylaws and Funding Sources**

At the recent Oyen-Lyalta Rail Company Board of Directors meeting on June 21, 2010 discussions included the potential need for municipal bylaws for the maintenance and reclamation of railway property in the instance that a deal cannot be reached and the rail assets are salvaged by CNR. These bylaws will provide standards for the reclamation of any rail assets if a salvage process occurs including environmental requirements, grading and leveling of land to original condition and removal of any and all debris, railway ties, and scrap materials.

Funding sources are being researched by the Board of Directors and consultants. A P3 (Public-Private-Partnership) Canada application will be submitted prior to the June 30 deadline. Currently it appears that purchasing an existing railway for short line operations may not qualify however, the program does speak to short line railway development. An application will be made to determine if the project qualifies. The Railway Board of Directors has been in contact with our MLA Hon. Jack Hayden, Minister of Agriculture to determine any Provincial special considerations that may be available for the retention of rail service in rural Alberta.

# ANNUAL GENERAL MEETING—Spring 2010

## AUMA MSP PILOT PROJECT

### **Municipalities Work towards Sustainability**

Palliser has spent the past few months working on a number of Municipal Sustainability Plans (MSP) and Integrated Community Sustainability Plans (ICSP). The Canada-Alberta New Deal for Cities and Communities (NDCC) was signed on May 14, 2005. The Agreement resulted in a release of federal funding for municipal infrastructure. Alberta Transportation administers the funds and signed an agreement with each Alberta municipality. The Government of Alberta announced that each municipality is required to have a Municipal Sustainability Plan or Integrated Community Sustainability Plan.

Palliser worked together with the Village of Rockyford, Village of Delia and Town of Hanna to complete their Integrated Community Sustainability Plans.

Palliser has administered the Beiseker Region Pilot (Beiseker, Irricana, Acme, Carbon, Linden and Drumheller) Project, which was chosen through AUMA. The Municipal Sustainability Plan Pilot Project is nearing completion for the 6 community Municipal Sustainability Plans. Town of Irricana, Village of Acme and the Village of Linden have finalized their Municipal Sustainability Plans. They have been adopted and are working on the implementation stage of turning their actions into community success.

Village of Beiseker and Village of Carbon have both held public meetings for draft MSP's and are scheduled to go for final adoption at the next council meeting. Town of Drumheller is in the process of reviewing the draft copy of their MSP.

A Regional Partnership Municipal Sustainability Plan is in the preliminary stages of development. A workshop will be held Tuesday June 29th with the 6 communities within the Pilot Project. Palliser will be facilitating the workshop and developing the Regional Partnership Municipal Sustainability Plan. We will develop actions that can help our municipalities work together regionally to become more sustainable.

*Thank you for attending our annual Spring General Meeting.*

*We hope you have a wonderful summer!*

